



**Making science work for development**

**Getting your research off the ground:  
support from UKCDS and beyond**

Vicky Morgan, Director  
[v.morgan@ukcds.org.uk](mailto:v.morgan@ukcds.org.uk)



# Making science work for development



Department for  
Business, Energy  
& Industrial Strategy



Department  
for International  
Development



Government  
Office for Science



Department  
of Health



Foreign &  
Commonwealth  
Office



Department  
for Environment  
Food & Rural Affairs



The Scottish  
Government



EPSRC

Engineering and Physical Sciences  
Research Council

E · S · R · C  
ECONOMIC  
& SOCIAL  
RESEARCH  
COUNCIL



Arts & Humanities  
Research Council

MRC

Medical  
Research  
Council

NERC

SCIENCE OF THE  
ENVIRONMENT



# UKCDS – the Secretariat



**VICKY MORGAN**

Director

@: [v.morgan@ukcds.org.uk](mailto:v.morgan@ukcds.org.uk)

t: +44 (0)20 7611 7330



**ROBIN TOOMEY**

Events & Office Manager

@: [r.toomey@ukcds.org.uk](mailto:r.toomey@ukcds.org.uk)

t: +44 (0) 207 611 8327



**JENNIE DODSON**

Research & Policy Officer

@: [j.dodson@ukcds.org.uk](mailto:j.dodson@ukcds.org.uk)

t: +44 (0)207 611 8215



**YASO KUNARATNAM**

Research & Policy Officer

@: [y.kunaratnam@ukcds.org.uk](mailto:y.kunaratnam@ukcds.org.uk)

t: +44 (0)207 611 8325



**TANIA GHOSH**

Communications Manager

@: [t.ghosh@ukcds.org.uk](mailto:t.ghosh@ukcds.org.uk)

t: 020 7611 8360

# Our expertise....



## Information sharing

Using our network to share opportunities and learning across the research for development community

Share knowledge on how to make cross-disciplinary collaboration work



## Mapping, Analysis & Foresight

Find UK research, of direct or potential application in development

Translate international development landscape for member organisations

Map and distil Information



## Partnerships & Research Collaboration

Engage, stimulate, connect and configure research collaborations and impact

Frame development challenges as research questions

Catalyse partnerships



## Informing policy & government

Access to expertise for policy and funding

Networks and information at UK research-development interface

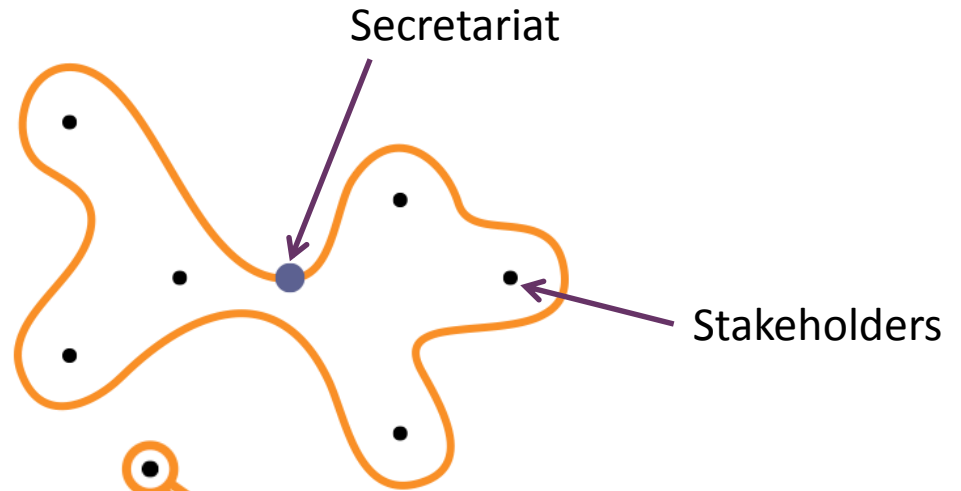
Drive

Connect

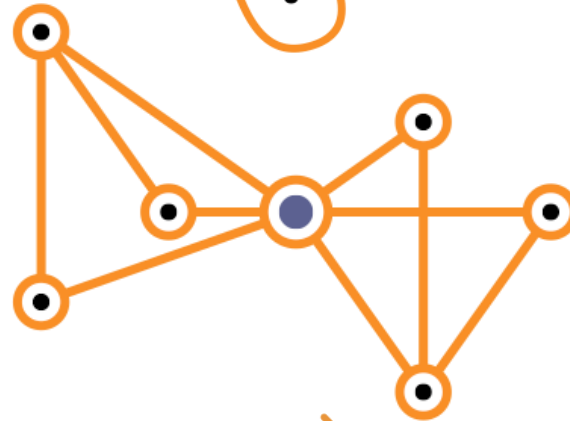
Change

# What does UKCDS do?

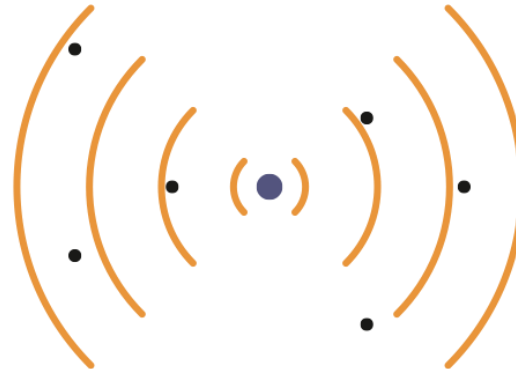
- Bring people together



- Share information



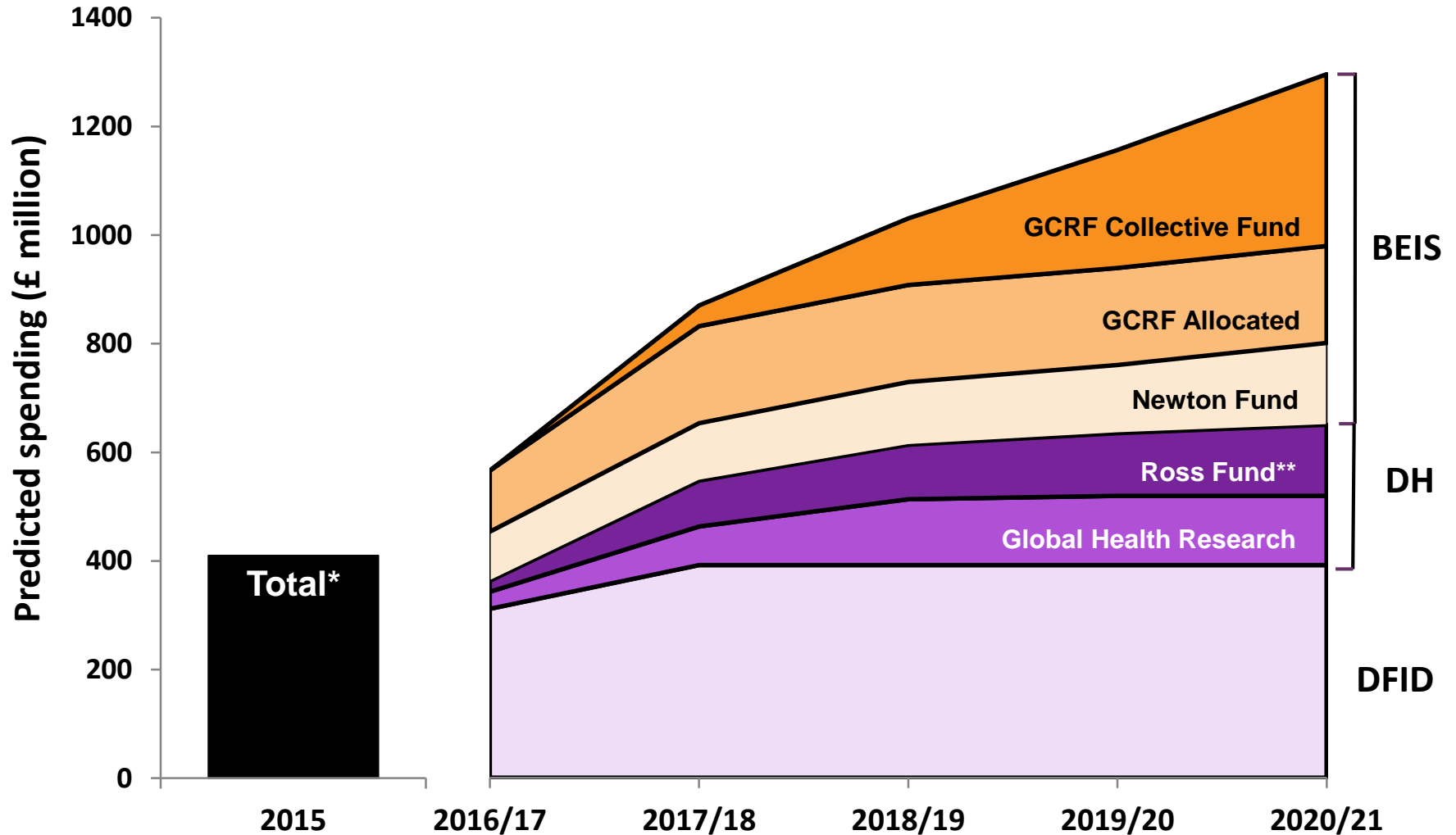
- Promote opportunities



# Connecting research with development challenges: responding to the changing landscape



# Rising ODA R&D spend across government: 2016-2021\*

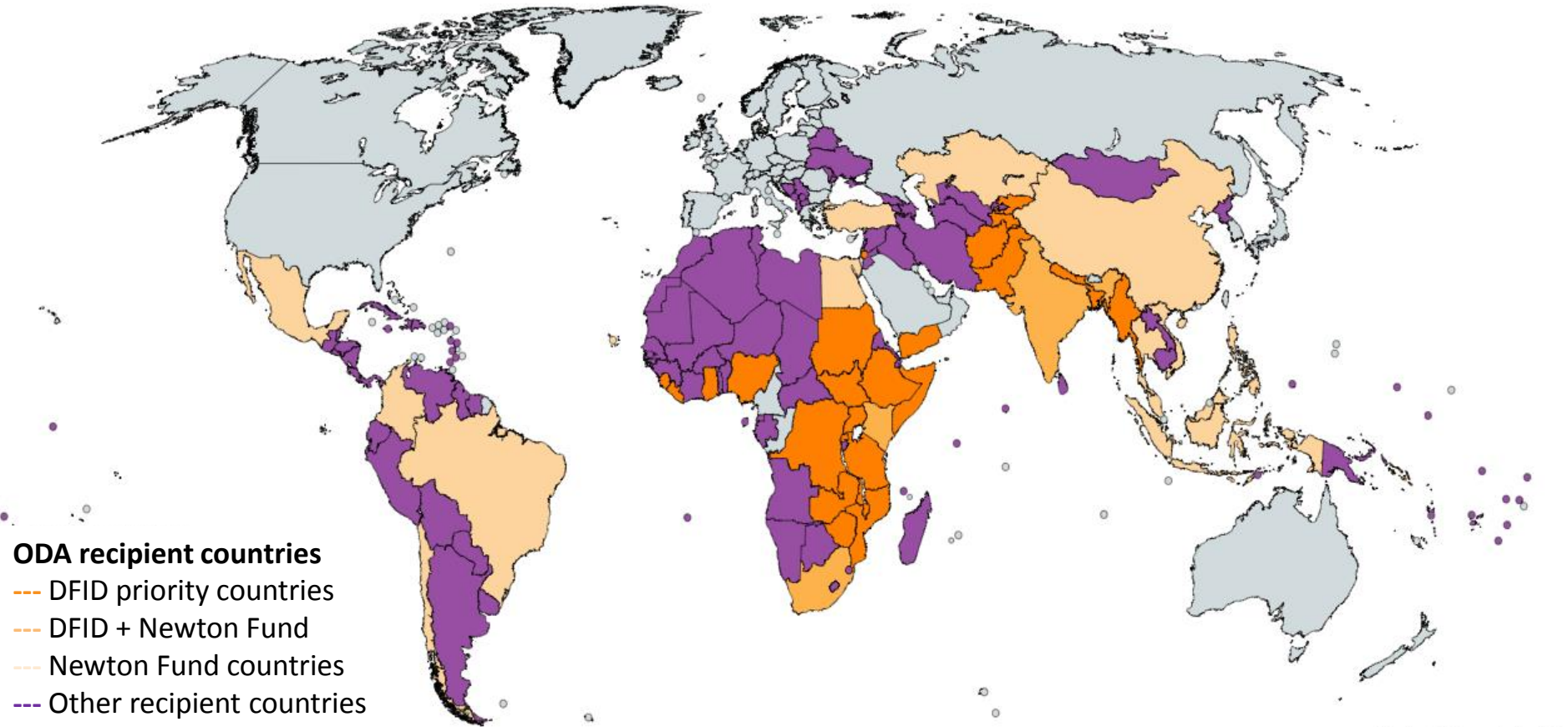


\* Based on UKCDS estimates from published forecasts or figures provided by members

\*\* DH managed Ross Fund spending. Minority (estimated at <20%) is for purposes other than research, surveillance or innovation

See text box for explanation of the different funds.

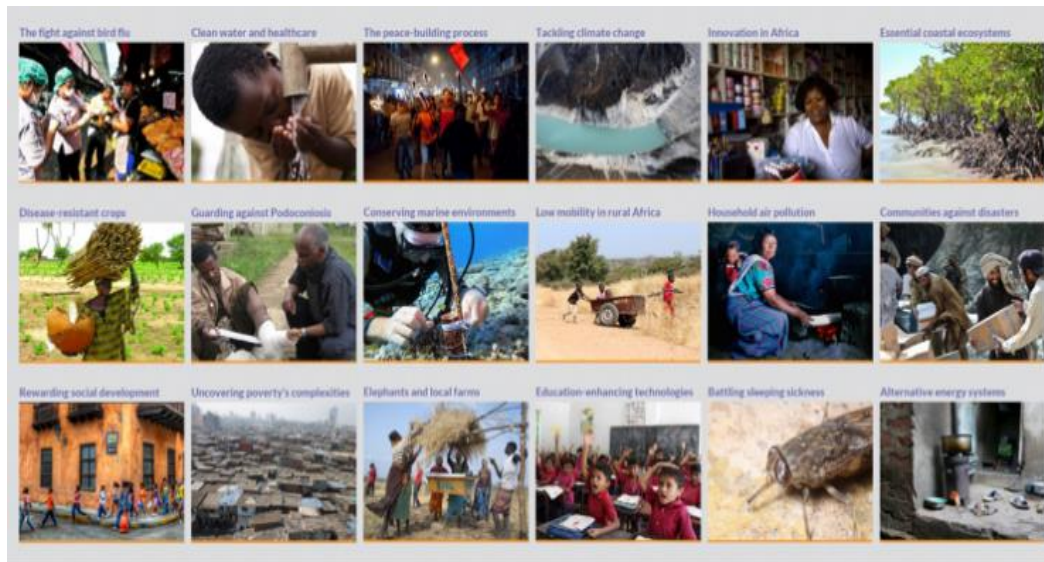
# ODA Recipient countries



Created with mapchart.net ©

# How can UKCDS help you?

## Researcher Hub: examples of case studies from around the world



A collection of our top 20 favourite impact stories showing how UK research is helping to improve the lives of people around the world.

[www.ukcds.org.uk/the-global-impact-of-uk-research](http://www.ukcds.org.uk/the-global-impact-of-uk-research)

### Using mobile technology for disease early-warning systems

The recent Ebola and Zika virus outbreaks have highlighted the pressing need for early warning systems to prevent the spread of infectious diseases. I-sense is a 5-year EPSRC-funded research programme, combining self-reported symptoms on the web with mobile phone-connected diagnostic tests for rapid detection of disease outbreaks. Following an initial focus on influenza, HIV and bacterial infections in the UK, the team has discovered the impact their technologies can have on HIV and Ebola in Africa.

#### Diagnosis and treatment of HIV/AIDS and Ebola in Africa

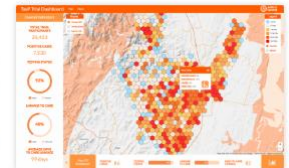
*"We are just beginning to see the power of harnessing telecommunications for health" says Professor Rachel McKendry, Director of I-sense. "In the UK smart phones are ubiquitous and even where we work in South Africa, in excess of 90% of households have access to a mobile phone. Our research aims to harness the power of smartphones to detect the early onset of disease when symptoms first appear."*



A new collaboration on HIV with the Africa Centre for Population Health (South Africa) began when Prof Deenan Pillay, the Deputy Director at I-sense, moved to work there. Researchers from I-sense and the UCL Bartlett Centre for Advanced Spatial Analysis (CASA) created a digital dashboard that shows, in real-time, whether HIV-infected participants are linked to antiretroviral therapy services. The dashboard masks the location of individual participants on the map to safeguard their identity but still enables the identification of areas where further support is needed. Following a trial of 24,000 patients with the Africa Centre, the ideas are now being used to build the first online NHS HIV self-testing patient pathway, an example of 'reverse innovation'.



The team have also repurposed their influenza technology to Ebola using paper microfluidic tests (similar to pregnancy tests) and a mobile phone app linked to a smartphone camera. This project was initiated by PhD student Polina Brangel in Prof Molly Stevens team at Imperial College London, and in collaboration with Prof Rachel McKendry's team at UCL. A paper is currently being written up.



Building public trust in the technologies and having strong data security is vital. The team are working with computer scientists, behavioural scientists, ethicists and a wide range of potential users at the beginning of technology development to address these challenges.

#### Impact

These projects are at an early-stage but demonstrate the potential of the technologies to be rapidly adapted and transferred to combat new diseases anywhere in the world.

For the Director of I-sense, Prof Rachel McKendry, the project has had a lasting personal impact. Having never worked in global development before, her first trip to the Africa Centre was an eureka moment:

*"I came back (from South Africa) inspired to focus my future research on global health needs. I stopped worrying about publishing Nature papers, and started thinking about how my research could be translated to deliver impact in some of the poorest countries in the world, who suffer the greatest burden from infectious diseases. [I saw how] being able to develop technologies that could improve the lives of wellbeing of people in developing countries would be personally rewarding."*

#### Lessons, challenges and learning

##### Promoting transdisciplinary research

The I-sense team is extremely interdisciplinary ranging from physicists to philosophers across five universities, industry, clinical and public health partners. To help the team 'speak the same language' and work well together they created an Education Alliance which regularly arranges lectures and workshops to grow the skills of their students and researchers. Prof McKendry is keen to see future dedicated 'themed' fellowships or Chairs that support these transdisciplinary approaches to tackle infectious diseases.

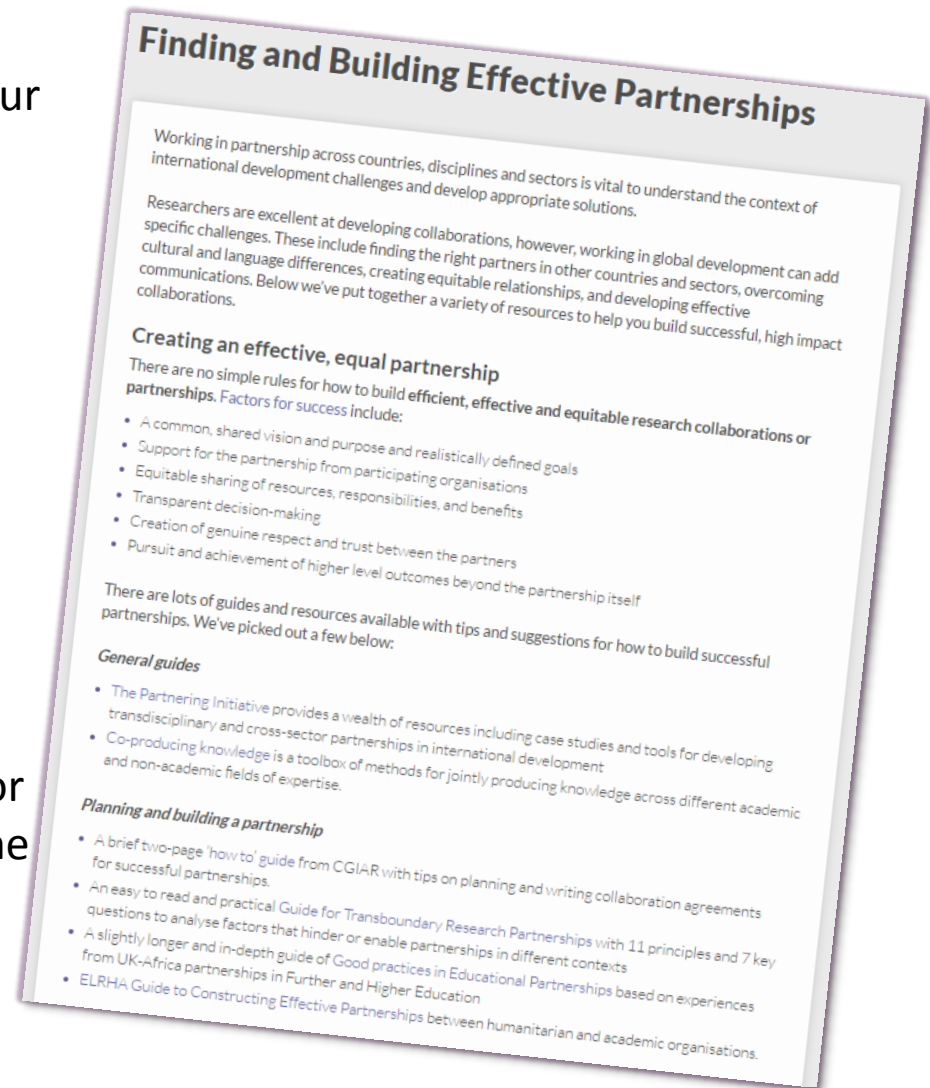
# Guides & resources

We have several guides and resources on our website:

- Finding and Building effective partnerships – advice and guidance on building successful partnerships
- REF2021 and Development Research – summary of REF2014 process and proposed changes in REF 2021 wrt development research.
- Five trends driving change in research for development – looking at trends over the next decade

For more:

<http://www.ukcds.org.uk/resources>



# Funding hub

## FUNDING LANDSCAPE

Funding for global development research is **increasing in size and variety**. Explore this hub for further information about key funding opportunities.



## FUNDING PROGRAMMES

We've created this hub to help you navigate the funding opportunities in global development research. Each of the sections below describes a key fund or funder and within each there is an overview of the focus areas for the funding, where they fund, eligibility for both UK and international researchers and their ongoing programmes.

All of the funding apart from that from the Wellcome Trust is part of the UK's commitment to spend 0.7 % of the UK's Gross National Income on Official Development Assistance (ODA). To be accepted as ODA, this funding must meet certain criteria.

### DFID



### GCRF



### Newton Fund



### Research Councils



### Ross Fund



### Wellcome Trust



## FUNDING CALLS

KEYWORD SEARCH



### Joint SEARO/TDR Small Grants Scheme for Implementation Research in Infectious Diseases of Poverty

The World Health Organization Regional Office for South-East Asia (SEARO), in collaboration with the Special Programme for Research and Training in Tropical Diseases (TDR), is pleased to announce the 2016 call for applications for the Joint SEARO/TDR small grants scheme for implementation research in infectious diseases of poverty.

Deadline: 20 JUNE 2016

### Travel Grants - Researcher Links / Newton Fund

Researcher Links Travel Grants provide financial support for early-career researchers to undertake an international research placement to strengthen links for future collaboration, build research capacity in developing economies, and enhance the researcher's career opportunities. Those residing in the UK can apply for funding to visit a university/research institution in one of the partner countries; those residing in one of the partner countries can apply for funding to come to the UK.

DEPARTMENT FOR BUSINESS, INNOVATION & SKILLS

Deadline: 27 JUNE 2016

### Workshop Grants - Researcher Links / Newton Fund

Newton Researcher Links Workshops bring together early-career researchers from the UK and a partner country to allow them to make international connections that can improve the quality of their research. Once funded, grants are available for early-career researchers in the UK and the country hosting the workshop to attend.

DEPARTMENT FOR BUSINESS, INNOVATION & SKILLS

Deadline: 27 JUNE 2016

### Institutional Links Grants - Newton Fund

Newton Institutional Links aim to build UK-partner country research and innovation collaborations centred on shared research and innovation challenges which have direct relevance to social welfare and economic development. The programme

[www.ukcds.org.uk/funding](http://www.ukcds.org.uk/funding)



# Weekly updates

## What's happening in Sci4Dev? A weekly roundup of news and views

17 JUNE 2016

UKCDS' new Director has been announced. I also highly recommend the summary report about interdisciplinary research with case studies of mechanisms from different research organisations around the world.

### Announcements and news

- **UKCDS' new Director, Vicky Morgan, has been announced.**
- **Wellcome** researcher Helen Lee has won the Popular Prize at the European Inventor Award 2016 for her mobile HIV diagnostic kit.
- Summary of the 2016 Annual Meeting of the Global Research Council including summary reports on supporting interdisciplinary research and the status of women in research



Scripps Scientist Visits Sierra Leone Hospital (Credit: IBMphotos)

### Funding

- The Soil Security small grants programme is open. Funded by NERC, BBSRC, the Scottish Government and Defra, the funding can be used to study non-UK soils, although proposals should have relevance for understanding and managing UK soils. Deadline 9 August 2016.
- MRC and DFID have announced a further call for proposals for the prestigious African Research Leader awards. Deadline 14 September 2016.
- UK-Indonesia Joint Health Research Call on Infectious Diseases. Funded by the MRC and the Dana Ilmu Pengetahuan Indonesia (DIPI) under the Newton Fund. Deadline 14 July 2016

### Other Interesting News and Links

- The new EAT-Lancet Commission will provide a 'roadmap' of food systems reform for the policy makers who are working to deliver the UN Sustainable Development Goals (SDGs) and uphold the Paris Climate Agreement.
- A new analysis predicts that falling fish stocks could have serious health consequences for more than 10% of

JENNIE DODSON

### RELATED CONTENT

#### NEWS

#### [New Director of UKCDS](#)

Today, Vicky Morgan has been announced as the new Director of the UK Collaborative on...

16 JUNE 2016

[MORE RELATED](#)

# Communication and events

- **Monthly & Weekly newsletters:** sign-up [www.ukcds.org.uk/sign-up](http://www.ukcds.org.uk/sign-up)
- **Twitter:** @UKCDS
- **Events:** [www.ukcds.org.uk/news-events/events](http://www.ukcds.org.uk/news-events/events)

## Upcoming events:

- AHRC/MRC Cross-Disciplinary Networking and Information Event on GCRF Global Public Health on 12 April
- Fleming Fund event on 24-25<sup>th</sup> April



**Making science work for development**

**Any questions?**

[v.morgan@ukcds.org.uk](mailto:v.morgan@ukcds.org.uk)